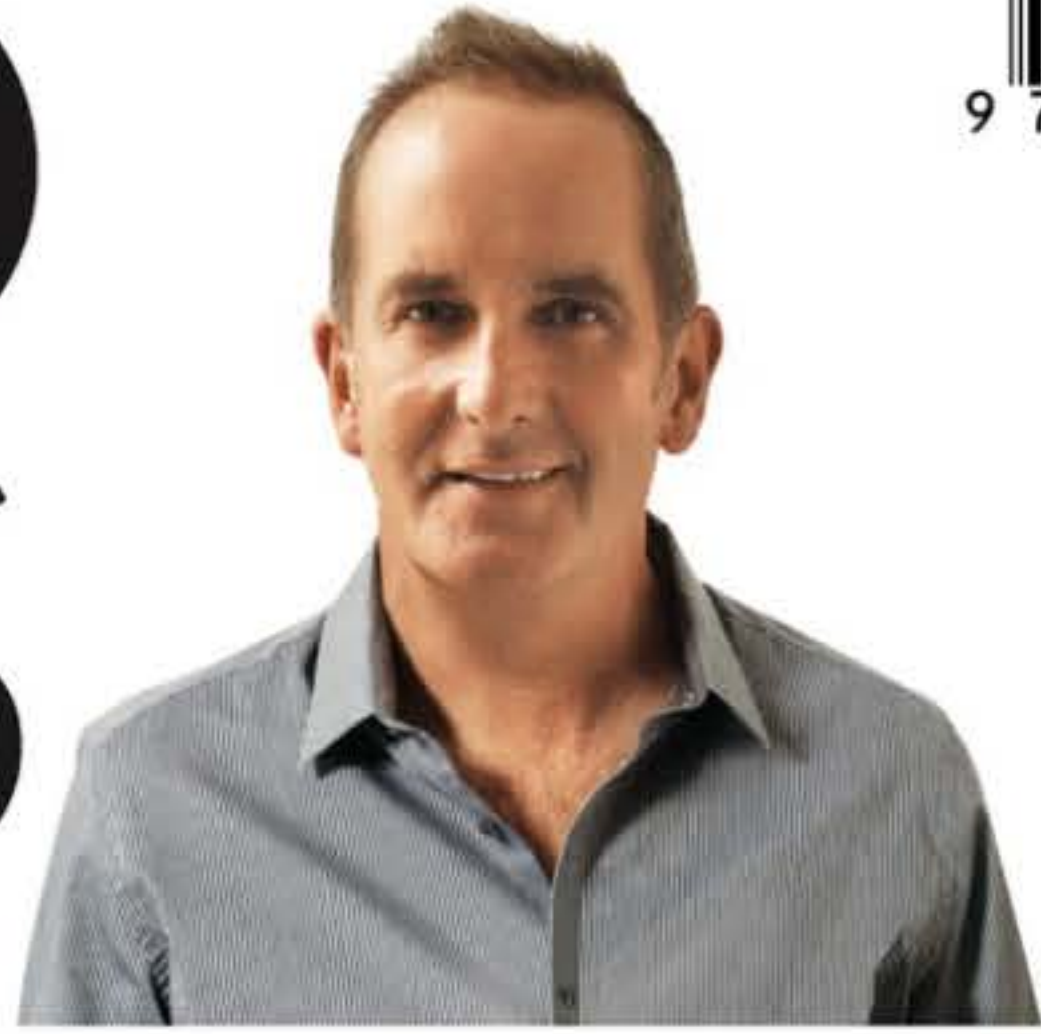


WIN AEG KITCHEN APPLIANCES WORTH £4,000



GRAND DESIGNS



£3.99
June 2015

The official magazine of the hit TV series

Relaxed living

101 PAGES OF BRIGHT, SUNNY, SPACIOUS INTERIORS

SHOWER ROOMS
STUNNING SCHEMES
& DESIGN SOLUTIONS

125
MUST-SEE
INSPIRING
UPDATES

GO ECO
ADD VALUE
& STYLE

14 COLOURFUL KITCHENS
TO SUIT EVERY HOME

SUMMER SHADES
NEW-SEASON
HUES WE KNOW
YOU'LL LOVE!

MODERNIST REBUILD

THE PERFECT HOUSE FOR
A GROWING FAMILY

SMART BUYS

PATTERNED TILES
NEW WALLPAPER
CHILDREN'S BEDS
LATEST SHUTTERS

GRANDDESIGNS 136 June 2015

Modern Homes / Design / Interiors / Projects



Three of the best

PENDANT LIGHTS

Our favourite statement shades to seek out at the festival



▲ Lattice look

This delicate design blends geometry with soft, natural tones. Mini pendant with lattice in silk and flat nickel (H22x Diameter16cm), £238, Tiger moth (0845 658 9059; tigermothlighting.com)



▲ Perfect imperfection

A crumpled base gives quirky charm to this Parison pendant in glass (H36xDiameter36cm), £895 each, by Nat Cheshire for Resident (+64 9 377 5556; resident.co.nz)



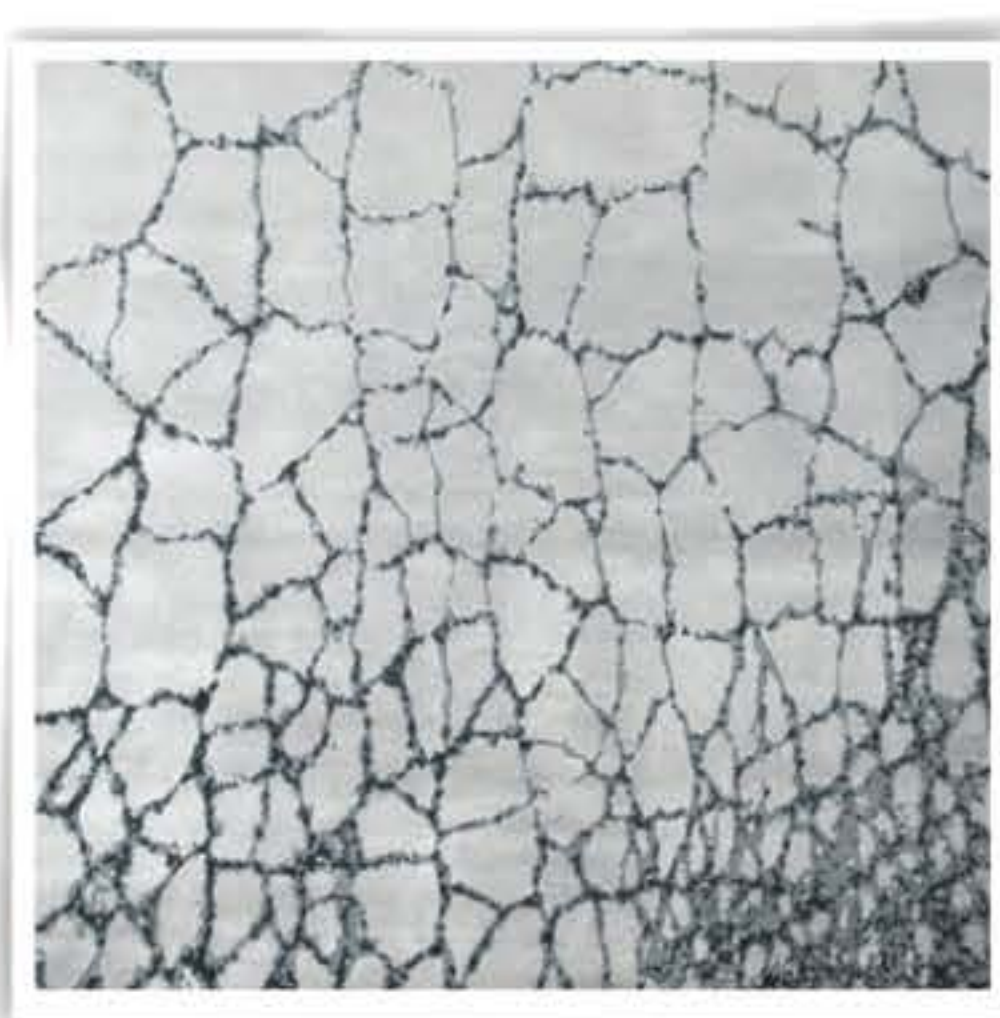
▲ Sweet jar

Inspired by children's confectionary, this design has retro appeal. Gobstopper in glass (H61xDiameter16cm), £1,690, Curiousa & Curiousa (01629 826 284; curiousaandcuriousa.co.uk)



DESIGNER COLLABORATION

Last year, ecological craftsman Sebastian Cox (020 8316 5679; sebastiancox.co.uk) collaborated with Sir Terence Conran for the Wish List at the V&A Museum, and showcased the sustainability of cherry wood. So, we can't wait to see the cherry and maple sculpture he has created with sculptor Laura Ellen Bacon (01629 822 663; lauraellenbacon.com) – called, intriguingly, The Invisible Store of Happiness.



INSPIRED BY NATURE

Rugmaker Tania Johnson will show her latest hand-knotted designs at the festival, and with Calvin Klein's first rug collection among her achievements, she's definitely one to watch. Her serene work features motifs such as rippling water and layered shadows; if you're looking for an original piece, pick up a London, Newton or Zurich (pictured) design from the new range (H274xW183cm), from £1,075. (07920 274 753; taniajohnsondesign.com)

PRIMARY PALETTE

Take your dining room back to the Bauhaus era with this plywood table (H75xW58xD58cm), £295, chair (H80xW40xD40cm), £245, and stool (H45xW40xD40cm) £175. From Baines&Fricker's SB01 Ply range, the pared-back designs were inspired by a poster for a Modernist art exhibition from the Thirties. (01273 671 718; bainesandfricker.net)



HOW TO CLAIM YOUR FREE TICKET

To obtain free entry to the show, register online at clerkenwelldesignweek.com

Playful ceramics

Love quirky accessories? Check out West Country designer Taz Pollard, who teams bold, modern colours with traditional pottery shapes inspired by ancient tulip-neck vessels. Inject some fun into a scheme with her new baluster jugs (H28xDiameter11cm), £166, which fuse bright glazes with neon rubber. (0345 259 1359; notonthehighstreet.com)

